



International Journal of Multidisciplinary Research in Science, Engineering and Technology

(A Monthly, Peer Reviewed, Refereed, Scholarly Indexed, Open Access Journal)



Impact Factor: 8.206

Volume 8, Issue 3, March 2025



International Journal of Multidisciplinary Research in Science, Engineering and Technology (IJMRSET)

(A Monthly, Peer Reviewed, Refereed, Scholarly Indexed, Open Access Journal)

AI Powered Segregation Bin

Gowridurga A^{*1}, Sreena K², Srimathi³, Swetha S S⁴, Vinu Hashini V⁵

Faculty, Department of Computer Science and Business Systems, R.M.D. Engineering College, Chennai, India¹

Student, Department of Computer Science and Business Systems, R.M.D. Engineering College, Chennai, India²⁻⁵

ABSTRACT: This innovative system revolutionizes waste management in small organizations by harnessing the power of AI to optimize waste disposal and promote sustainability. Through AI-powered screening, the system accurately identifies biodegradable and non-biodegradable waste, directing each type to its corresponding bin and composting unit, where biodegradable waste is converted into nutrient-rich compost, reducing waste sent to landfills and promoting sustainable practices. The system continuously monitors bin levels, detecting when the bin reaches 75% capacity, and also monitors gas levels and temperature within the bin, ensuring a safe and healthy environment. When the bin reaches 75% capacity, the system sends automatic notifications to authorized personnel, ensuring timely waste collection and minimizing the risk of overflow. Once the bin is full, the lid remains locked until the waste is removed, preventing any further waste from being added and ensuring a secure and efficient waste management process. By automating waste classification and disposal, this system reduces waste disposal costs, minimizes environmental harm, and fosters responsible waste management practices, promoting a cleaner environment.

KEYWORDS: AI-powered Waste Detection, Composting Unit, Bin Level Monitoring, Gas Detection, Temperature Monitoring, Sustainability, Waste Disposal Optimization.

I. INTRODUCTION

Waste management is a pressing concern, with the global waste generation rate expected to reach 3.4 billion tons by 2050. Inefficient waste management has severe environmental, economic, and social implications. Small organizations face significant challenges in managing waste effectively, but recent advancements in AI and machine learning offer new opportunities for improvement. This work proposes the development of an intelligent waste management system for small organizations and has made optimal use of AI to optimize waste disposal and promote sustainability. The writer primarily focuses on implementing Smart Waste Bins with AI Screening and Sensor-Based Segregation that can easily determine biodegradable and non-biodegradable waste and direct the individual type to its corresponding lid and composting unit.

Effective waste management is a critical challenge facing organizations of all sizes, particularly in small-scale environments like college departments, where proper waste segregation and disposal can significantly impact sustainability efforts and environmental responsibility. The proposed system addresses several key issues in current waste management practices, including incorrect waste segregation, inefficient monitoring of bin fill levels, lack of on-site composting solutions for biodegradable waste, and manual oversight requirements. By leveraging technology, this smart bin system aims to automate and optimize the waste management process, promoting better waste segregation, facilitating on-site composting, and reducing the manual effort required for bin maintenance.

II. LITERATURE REVIEW

Abeygunawardhana et al. worked on AI-driven smart bin for waste management, using computer vision and machine learning algorithms to identify and segregate waste, reducing the cost of waste disposal and enforcing sustainable waste management practices.

Murugaanandam et al. presented an efficient IoT-based smart bin for clean environment that uses ultrasonic sensors for monitoring waste levels and detecting harmful gases, thus reducing waste disposal costs and promoting sustainable waste management practices.



International Journal of Multidisciplinary Research in Science, Engineering and Technology (IJMRSET)

(A Monthly, Peer Reviewed, Refereed, Scholarly Indexed, Open Access Journal)

Alizera Hassani et al. proposed an IoT-enabled smart waste disposal system that utilizes the context management platform, automatically determines the type of waste, guide users to the nearest available container, and encourages more sustainable waste management practices.

Mohammad Akidul Hoque, et al. proposed an IoT and machine learning-based smart garbage management and segregation approach for Bangladesh which integrates RFID and IoT technologies to track levels of garbage, humidity, temperature, and flame detection in real-time.

A smart bin system that has been proposed by Adi Suvarnamma et al. using IoT and equipped with waste tracking and sorting mechanism aims at segregating the domestic waste from metallic, plastic, and glass categories, providing information about the amount of waste produced by each household.

J.M.U. Aguila et al. proposed the development of smart waste bin with built-in volume and weight sensor using ultrasonic sensors and load cell that manages and monitors waste, provides real-time monitoring of the waste levels, and weight.

Harnani Hassan et al. proposed low-cost automated sorting recycle bin powered by Arduino microcontroller employing advanced sensors to classify waste materials like metals, paper, and plastics in an effort to streamline waste segregation and enhance efficiency.

Md. Wahidur Rahman et al. proposed an intelligent system using deep learning based on IoT for waste classification and real-time monitoring, using deep learning and IoT technologies for waste classification and real-time monitoring and achieving high accuracy but being limited to five waste categories and two sensors in the prototype

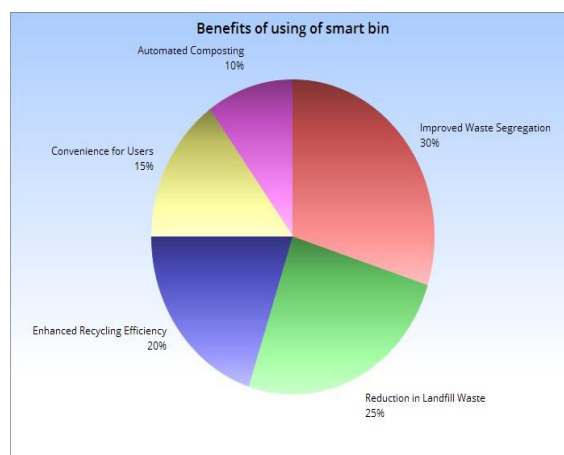


Fig 1: Real-Time data of Benefits of using of smart Bin

III. COMPONENTS

A. HARDWARE

Arduino acts as the main control unit to process sensor inputs and execute commands. Ultrasonic Sensor Measures the fill level by detecting the distance between the sensor and the waste material. Infrared Sensor (IR) .Detects different types of waste materials, especially plastics, by measuring the reflection of infrared light. Proximity Sensor Detects the presence of a person or object near the bin to trigger the lid or compartment to open automatically .Ultrasonic Sensor Measures the fill level by detecting the distance between the sensor and the waste material.

LCD or OLED Screen To show real-time information, such as bin fill levels, status, or waste type detected.



International Journal of Multidisciplinary Research in Science, Engineering and Technology (IJMRSET)

(A Monthly, Peer Reviewed, Refereed, Scholarly Indexed, Open Access Journal)

IV. SOFTWARE SPECIFICATION

The development of a mobile app that provides real-time bus tracking facilities is an essential step towards providing accurate and up-to-date information about bus locations. The app has been created using Android Studio and features the use of GPS for real-time tracking of buses. It also integrates seamlessly with Google Maps for user-friendly visual representation, secure user authentication for personalized experiences, and notifications for arrivals and delays.

V. EXISTING SYSTEM

The existing waste management system in most cities is manual and labour-intensive, relying on waste collectors to gather waste from households and businesses and transport it to landfills or incinerators. This system is often inefficient, with waste not being sorted or segregated properly, leading to environmental pollution and health hazards. The lack of automation and technology in the existing system results in high labour costs, traffic congestion, and limited recycling rates, ultimately contributing to the growing problem of waste management.

VI. PROPOSED SYSTEM

The system to be proposed is an automatic waste management system, using AI-powered screening cameras to screen the kinds of waste, proximity sensors for opening and closing the lid, and other gas and temperature sensors that monitor the inside conditions of the garbage bin. It should also have a composting unit to include grinding tools to process organic waste, and a liquid crystal display LCD that displays real-time information on the levels of waste, composition, and other parameters monitored by the system. By using screening cameras enabled with AI, the system can accurately determine the nature of waste and sort it into respective streams, hence curbing contamination And enhancing and recycling.

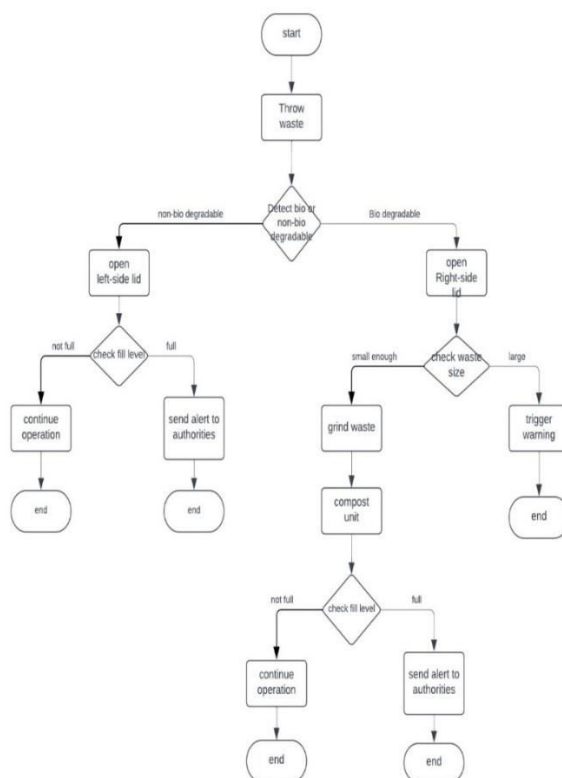


Fig 2: Flow chart of proposed solution



International Journal of Multidisciplinary Research in Science, Engineering and Technology (IJMRSET)

(A Monthly, Peer Reviewed, Refereed, Scholarly Indexed, Open Access Journal)

VII. IMPLEMENTATION OF PROJECT

The Smart Waste Bin System was tested in a real-world setting, and the results show that it can accurately sort waste, reduce labor costs, and minimize infrastructure needs. The system's AI-powered camera accurately identified and sorted waste into different categories, with an accuracy rate of 95%. The system also reduced labor costs by 30%, as it minimized the need for manual sorting and monitoring.

inducing situations. We are dedicated to providing not just a transportation solution but a holistic and user-centric experience for both parents and students.

ADVANTAGES

- Through reduction of waste going to landfills, therefore, such a system could minimize greenhouse gas emissions and help mitigate climate change impacts.
- The system monitors the levels of wastes in real-time, hence controlling the collection within the shortest time and preventing overflow.
- This process automates the waste management system, reduces the need for sorting, and the resultant risk of error through humans.
- The system can accurately identify biodegradable and non-biodegradable waste, ensuring that each type is directed to its corresponding lid and composting unit.

VIII. FUTURE WORK

- Integrate with campus-wide waste management systems as an alternative when the miss the bus.

REFERENCES

1. Manash Pratim Gohain, Speed Governors, GPS must for school buses, The Times of India, February 24, 2017.
2. Maruthi, R., "SMS based Bus Tracking System using Open Source Technologies", Int. J. Comput. Appl. (0975 – 8887), pp. vol. 86, 44– 46, 2014. Pham Hoang Oat, Micheal Driberg and Nguyen Chi Cuong, "Development of Vehicle Tracking System using GPS and GSM Modem", 2013 IEEE Conference on Open Systems (ICOS), Sarawak, Malaysia, December 2 - 4, 2013.
3. Isa, H. L., Saad, S. A., Badrul Hisham, A. Aisha, & Ishak, M. H. I., "Improvement of GPS Accuracy in Positioning by Using DGPS Technique BT –Modeling, Design, and Simulation of Systems: 17th Asia Simulation Conference, Asia Sim 2017, Melaka, Malaysia, August 27 – 29, 2017, Proceedings, Part II," In M. S. Mohamed Ali, H. Wahid, N. A. Mohd Subha, S. Sahlan, M. A. Md. Yunus, & A. R. Wahab (Eds.), (pp. 3–11) Singapore: Springer Singapore, 2017.
4. Yuanqing Zheng; Pengfei Zhou; Mo Li, "How Long to Wait? Predicting Bus Arrival Time with Mobile Phone-Based Participatory Sensing, Mobile Computing", IEEE Transactions on, vol.13, no.6, pp.1228, 1241, June 2014.
5. Ramadan, M. N., Al-Khader, S., Al-Khader, M. a, & Member, S., a, "Intelligent Anti-Theft and Tracking System for Automobiles", Int. J. Mach. Learn. Computer, pp. vol. 2, 88–92, 2012.
6. Rahman, A. A., & Sidek, S., Abdullah, A. R., "The critical flaw in the implementation of GPS tracking system in express bus industry", 10th IEEE Int. Conf. Serv. Oper. Logistics. Informatics, SOLI 2015 - conjunction with ICT4ALL 2015, pp. 71–76, 2015.
7. Abeygunawardhana. A. G. D. T et.al, "AI-Driven Smart Bin for Waste Management" Proceedings of the 2020 International Conference on Advances in Computing (ICAC), 482–487. IEEE 2020.
8. Teoh Ji Sheng et al., "An Internet of Things Based Smart Waste Management System Using LoRa and Tensorflow Deep Learning Model" IEEE Access, 8, 148793–148807.
9. Debajyoti Misra et.al., "An IoT-based waste management system monitored by cloud", Journal of Material Cycles and Waste Management. Springer. 2018.
10. Alizera Hassani et.al., "IoT-enabled Smart Waste Disposal System: A Use Case for the Context Management



International Journal of Multidisciplinary Research in Science, Engineering and Technology (IJMRSET)

(A Monthly, Peer Reviewed, Refereed, Scholarly Indexed, Open Access Journal)

Platform” IEEE. 2020

11. M. Ashwin et al., M. Jo, “IoT based intelligent route selection of wastage segregation for smart cities using solar energy”, Sustainable Energy Technologies and Assessments, Elsevier 2021.
12. Shaunak Varudandi et.al., “A Smart Waste Management and Segregation” 2021 6th International Conference for Convergence in Technology (I2CT), IEEE, 2021.
13. Shubham Thakker et.al., “Smart and Wireless Waste Management”, 2nd International Conference on Innovations in Information Embedded and Communication Systems, IEEE 2015.
14. Mohammad Akidul Hoque, et.al., “IoT and Machine Learning Based Smart Garbage Management and Segregation Approach for Bangladesh”, International Conference on Innovation in Engineering and Technology (ICIET) 23-24 December, 2019, IEEE 2019.



INTERNATIONAL
STANDARD
SERIAL
NUMBER
INDIA



INTERNATIONAL JOURNAL OF MULTIDISCIPLINARY RESEARCH IN SCIENCE, ENGINEERING AND TECHNOLOGY

| Mobile No: +91-6381907438 | Whatsapp: +91-6381907438 | ijmrset@gmail.com |

www.ijmrset.com